



Workspace Control

Release Notes

2021.1 (version 10.6.0.0)

Copyright Notice

This document is provided strictly as a guide. No guarantees can be provided or expected. This document contains the confidential information and/or proprietary property of Ivanti, Inc. and its affiliates (referred to collectively as "Ivanti") and may not be disclosed or copied without prior written consent of Ivanti.

Ivanti retains the right to make changes to this document or related product specifications and descriptions, at any time, without notice. Ivanti makes no warranty for the use of this document and assumes no responsibility for any errors that can appear in the document nor does it make a commitment to update the information contained herein. For the most current product information, please visit www.ivanti.com.

Copyright © 2021, Ivanti. All rights reserved.

Protected by patents, see <https://www.ivanti.com/patents>.

Contents

Important Information	4
What's New	6
User Voice Feature Requests	6
New Enhancements and Improvements	13
Compatibility Updates	25
Bug Fixes	26
Additional information	34

Important Information

New installation

Before performing a new installation of Workspace Control 2021.1, please read the following release note carefully:

ActiveReports components

The ActiveReports components (libraries and object code) included in this release are proprietary to Data Dynamics, Ltd. (acquired by: GrapeCity, Inc.). By downloading and installing this release, end-users assume and accept sole responsibility of the use of the ActiveReports components, and will not act contrary to license terms applicable and available via <https://www.grapacity.com/legal/eula>.

Microsoft .NET Framework prerequisite



Workspace Control 2021.1 (version 10.6.0.0) requires .NET Framework 4.7.2 or higher.

Drivers

The following table shows when Workspace Control drivers were last updated:

Driver	Last updated in
FileGuard	Ivanti Workspace Control version 10.3.40.0
ImgGuard	Ivanti Workspace Control version 10.4.50.0
NetGuard	Ivanti Workspace Control 2020 (version 10.5.0.0)
RegGuard	Ivanti Workspace Control version 10.3.120.0
RESNFLT	Ivanti Workspace Control 2021.1 (version 10.6.0.0)



When upgrading to a Workspace Control version that updated one of drivers listed in the table above, a restart is required to activate the updated driver.

Datastore

The following table shows the Workspace Control version that introduced the Datastore revision level that applies to Workspace Control 2021.1.

Datastore revision level	Introduced in
13	RES Workspace Manager 2014 SR3



When upgrading to Workspace Control 2021.1, if the Datastore is of a lower revision level than the level specified in the table above, then the Datastore is automatically updated.

What's New

This section covers new features, enhancements, improvements or compatibility updates included in Ivanti Workspace Control 2021.1.

The Workspace Control 2021.1 Release Notes is a cumulative document that includes new features, compatibility updates and improvements from previous Workspace Control versions, starting with 10.5.10.0 and up to the current version - 10.6.0.0.

User Voice Feature Requests

Thank you for your support and continued submission of Product Enhancement Requests using the [Product Ideas page on the Ivanti Community](#). These requests are reviewed every week and form a valuable input for the Workspace Control product roadmap. Please continue to submit your ideas and vote for your favorites.

The following user requests have been addressed in this release:

Microsoft Azure Active Directory integration

Workspace Control can deliver applications and resources based on user and group information retrieved from Microsoft Azure Active Directory.

Additional information is found in the [Workspace Control: Microsoft Azure Integration Guide](#).

More details about the User Voice Feature Request are found on [Ivanti Ideas](#).

Enhanced interface for User Registry Settings and Policies

When creating, editing or duplicating registry settings or policies under **Composition > Actions by Type > User Registry**, the configuration window now features **OK** and **Cancel** buttons.

More details about the User Voice Feature Request are found on [Ivanti Ideas](#).

Learning mode for Authorized Certificates

Learning mode can be now configured for authorized certificates. To enable learning mode, open the Registry Editor and configure the following registry setting:

Key	HKEY_LOCAL_MACHINE\SOFTWARE\WOW6432Node\RES\Workspace Manager
Value	CertSecLearning
Type	REG_SZ
Data	Yes

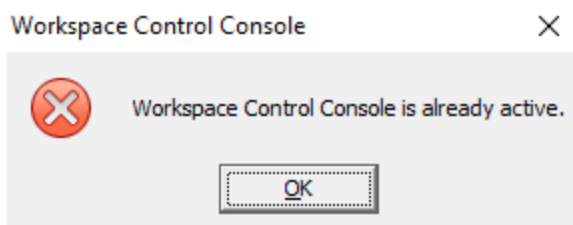
Additional information is found in this [KB article](#).

More details about the User Voice Feature Request are found on [Ivanti Ideas](#).

Improved detection times when launching a second Workspace Control Console instance

When starting the Workspace Control Console, the application first checks if another instance is already opened. Detection times for such events are now improved.

If the Workspace Control Console is already opened, then a second instance cannot be started. Workspace Control stops the process and displays the following message:



More details about the User Voice Feature Request are found on [Ivanti Ideas](#).

Connect to the Datastore using MultiSubnetFailover

Configure the following registry setting to configure Workspace Control to connect to the Datastore using the `MultiSubnetFailover = True` connection property in the SQL connection string.

Key	<ul style="list-style-type: none">• HKEY_CURRENT_USER\SOFTWARE\RES\Workspace Manager (32-bit) or• HKEY_LOCAL_MACHINE\SOFTWARE\WOW6432Node\RES\Workspace Manager (64-bit)
Value	MultiSubnetFailover
Type	REG_SZ
Data	Yes



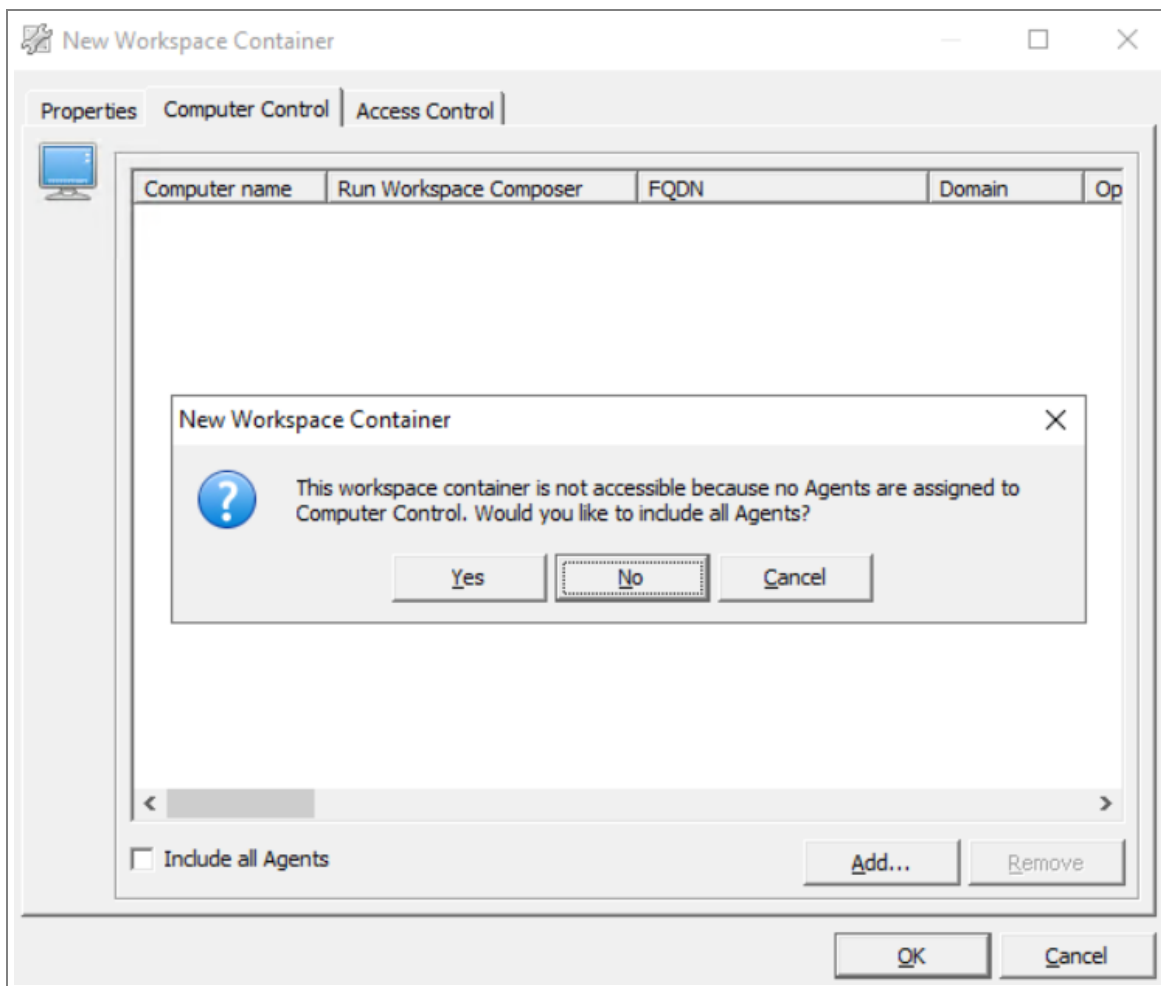
This is applicable only when connecting to a Microsoft SQL Server Always On Availability Group listener or SQL Server Failover Cluster Instance.

Additional information is found in this [KB article](#).

More details about the User Voice Feature Request are found on [Ivanti Ideas](#).

Default answer for empty Workspace Containers can be set to "No"

When creating an empty Workspace Container (without any assigned Agents), the default answer to the following prompt is configurable to **No**.



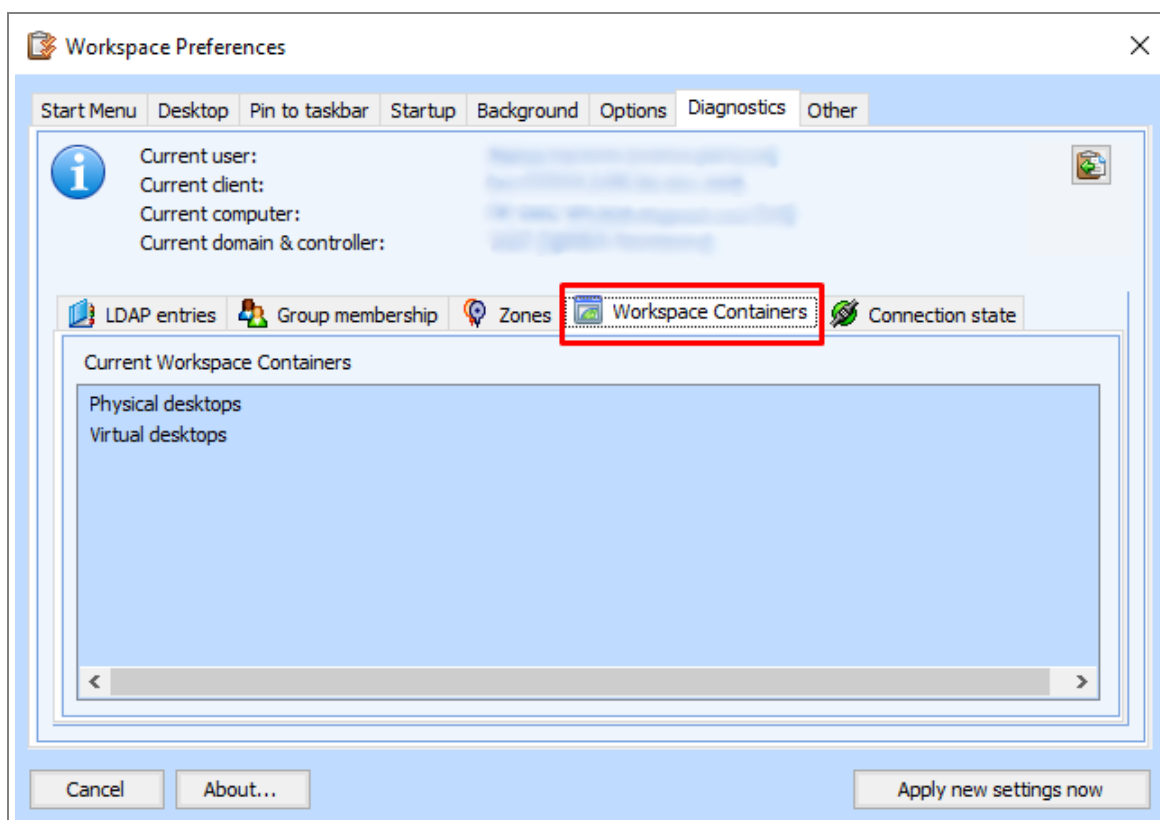
To change the default answer to **No**, create a new registry string value:

Key	<ul style="list-style-type: none">• HKEY_LOCAL_MACHINE\SOFTWARE\RES\Workspace Manager (32-bit)• HKEY_LOCAL_MACHINE\SOFTWARE\WOW6432Node\RES\Workspace Manager (64-bit)
Value	DefaultAnswerIncludeAllAgents
Type	REG_SZ
Data	No

More details about the User Voice Feature Request are found on [Ivanti Ideas](#).

Workspace Container information added to Workspace Preferences

For user sessions, Workspace Container information is now added to the Workspace Preferences menu, under the **Diagnostics > Workspace Containers** tab.

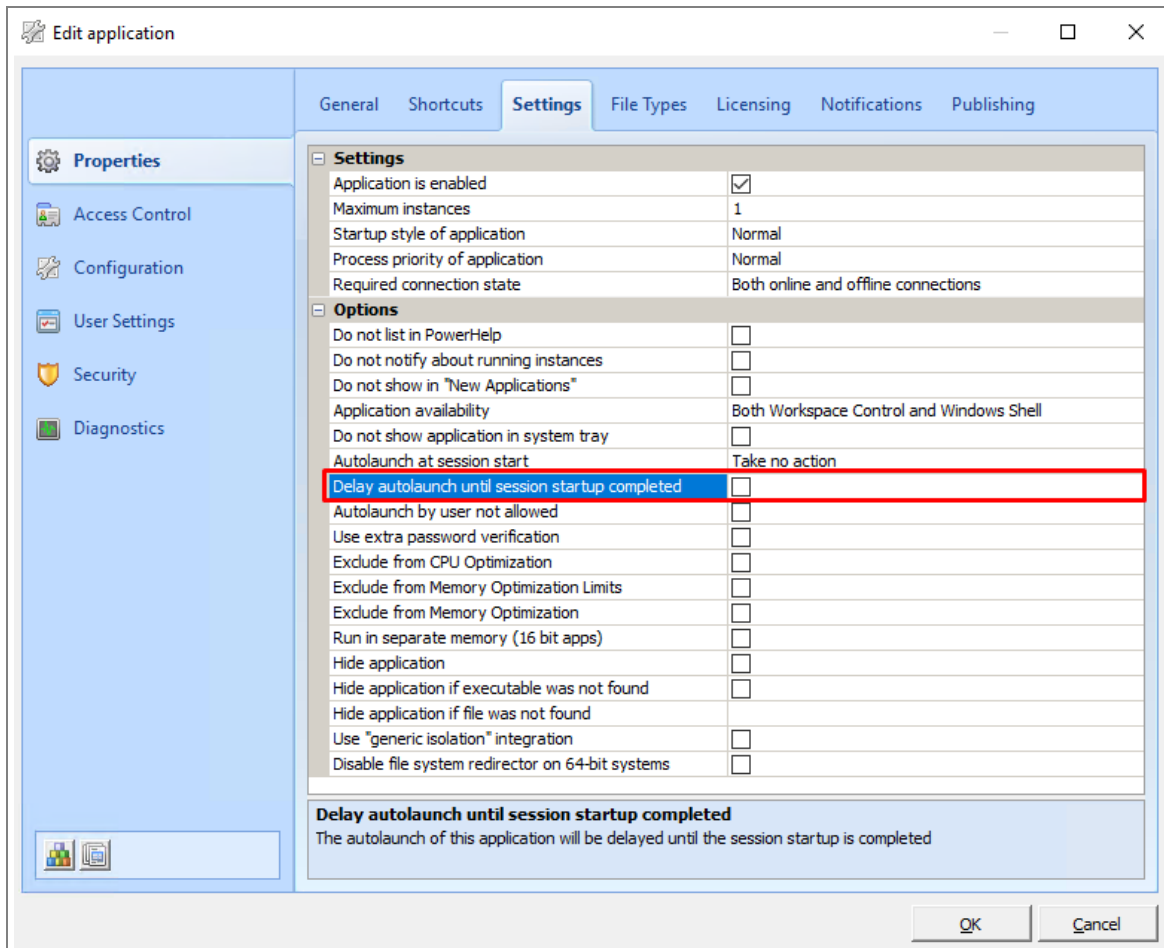


More details about the User Voice Feature Request are found on [Ivanti Ideas](#).

Delayed automatic launch of applications

Workspace Control managed applications can be automatically launched at logon. Applications can now be configured to automatically launch only after all other logon actions have finished.

The option is found in the Workspace Control Console under **Composition > Applications**. Open an application from the list and under **Properties > Settings** tab > **Delay autolaunch until session startup completed**.



This option is available for both voluntary and mandatory pinned applications. However, it is not available for User Installed applications, as they are not managed from the Workspace Control Console.

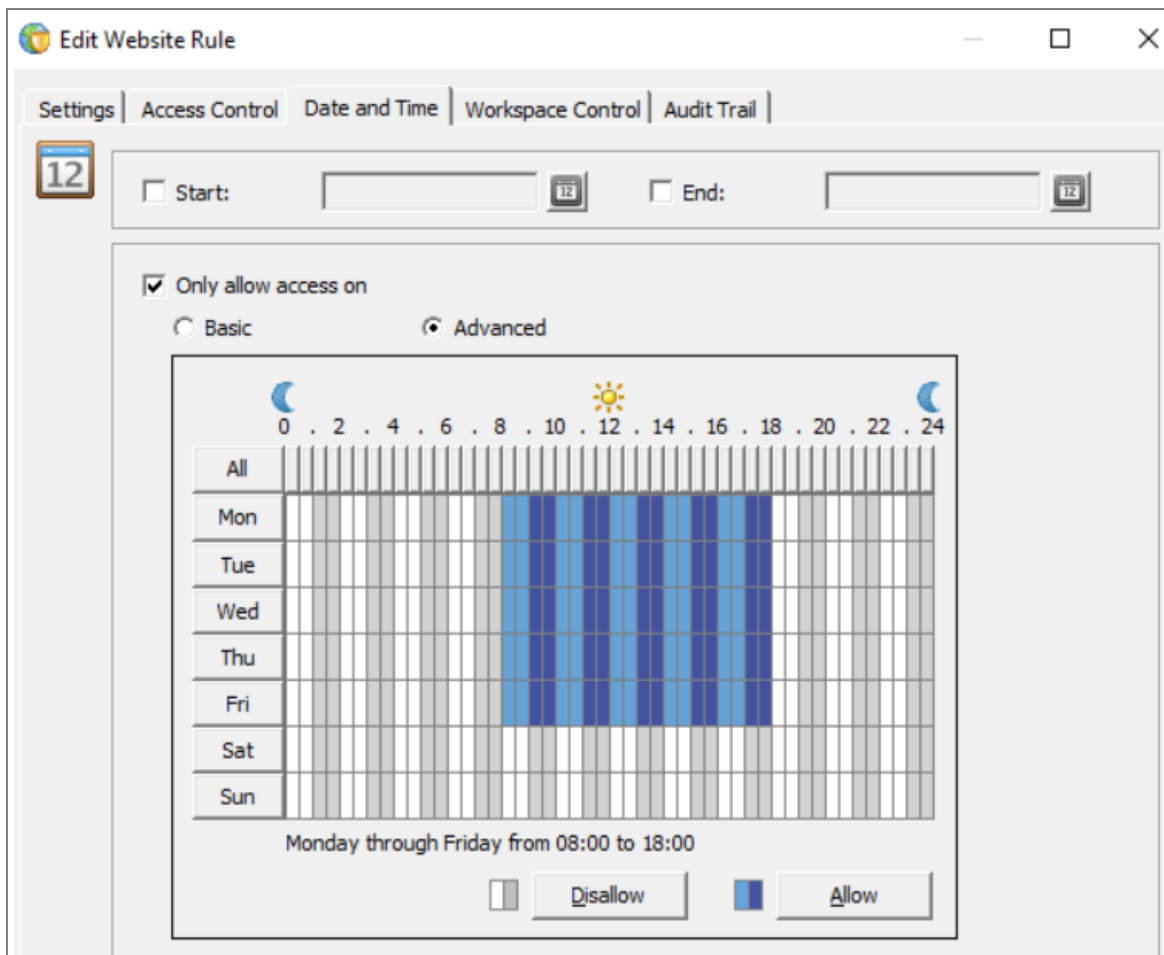
More details about the User Voice Feature Request are found on [Ivanti Ideas](#).

Enhanced Date and Time Access Control for Websites and Authorized Files

Date and Time Access Control for websites and authorized files has been enhanced and now allows more configuration options.

For websites, navigate to **Security > Applications > Websites**, open a website and go to the **Date and Time** tab. For more details, see the [Workspace Control Administration Guide](#).

For authorized files, navigate to **Security > Authorized Files**, open an authorized file and go to the **Date and Time** tab. For more details, see the [Workspace Control Administration Guide](#).



Additional information is found in this [KB article](#).

More details about the User Voice Feature Request are found on [Ivanti Ideas](#).

New Enhancements and Improvements

The following enhancements and/or improvements are part of this release:

Saving user settings to Microsoft Azure blob storage

User settings can be synchronized between the local file system and the Microsoft Azure blob storage at the start and at the end of user sessions managed by Workspace Control, or during sessions at defined cache intervals.

Additional information is found in the [Workspace Control: Microsoft Azure Integration Guide](#).

Additional logon performance information for Ivanti Neurons for Edge Intelligence

In Ivanti Neurons for Edge Intelligence, a new sensor was implemented to query detailed information on the logon process.

This option is found in the Workspace Control Console under **Ivanti Neurons for Edge Intelligence > Health > Logon Performance**.

Workspace Control files are digitally signed

The following files are now digitally signed:

- `pwrpx64.exe`
- `vcresica.dll`
- `vcresrdp64.dll`

Additional information is found in this [KB article](#).

Automatic detection of proxy settings during Neurons Agent installation

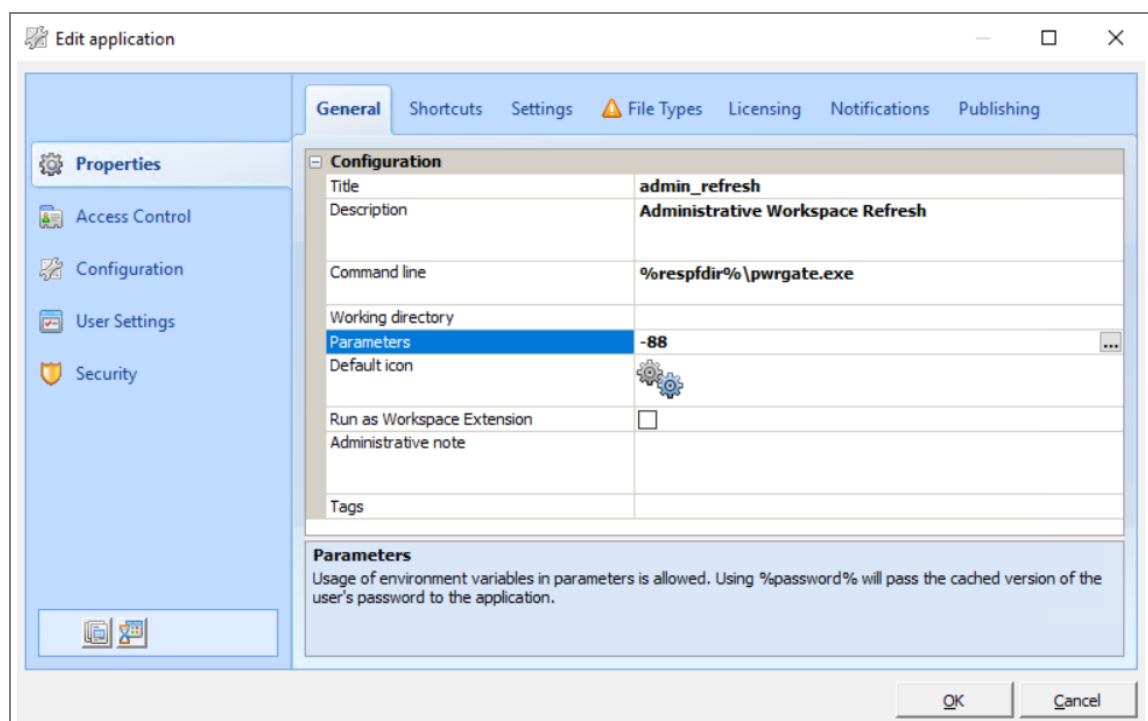
Workspace Control Agents now detect whether or not a proxy auto-config (PAC) file is used in the customer environment. If Neurons for Edge Intelligence is enabled, when Neurons Agents are installed, they are configured according to the detected proxy settings.

Administrative Workspace refresh can be executed in a user session

Administrative Workspace refreshes are initiated from outside the Workspace Control Composer, for instance, through the Workspace Control Console, Identity Director Services, or Automation. An administrative Workspace refresh can now be triggered from user sessions by executing the following command from Command Prompt: `%respfdir%\pwrgate.exe -88`

To configure the command as a managed application, follow these steps:

1. In the Workspace Control Console, navigate to **Composition > Applications**.
2. Right-click in the **Start Menu** window and select **New Application**.
3. In **Properties > General** tab, configure the following fields:
 - **Title:** Choose an appropriate name
 - **Command line:** `%respfdir%\pwrgate.exe`
 - **Parameters:** `-88`



4. Click **OK** to create the new managed application.

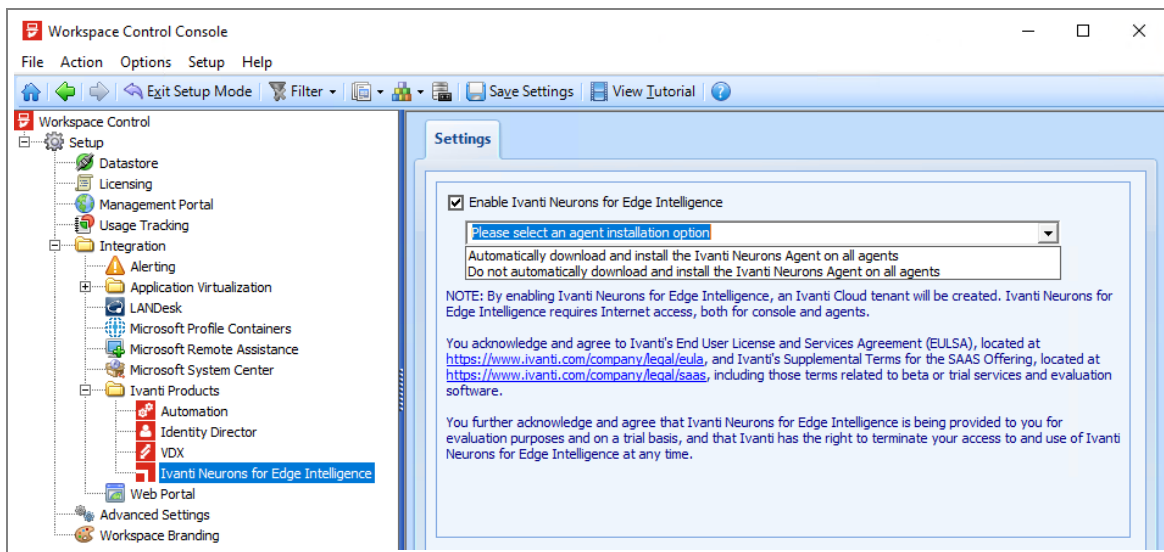
Additional information is found in this [KB article](#).

Control over the installation of Ivanti Neurons Agents

With Ivanti Neurons for Edge Intelligence, Neurons Agents are automatically installed on all Workspace Control Agents when they are upgraded to Workspace Control 2020.0.

The installation of Neurons Agents can now be controlled. They can be automatically installed on all Workspace Control Agents or manually installed on selected Workspace Control Agents.

This option is found in the Workspace Control Console under **Setup > Ivanti Products > Ivanti Neurons for Edge Intelligence**. Check the box next to **Enable Ivanti Neurons for Edge Intelligence** and select an option from the drop-down menu.



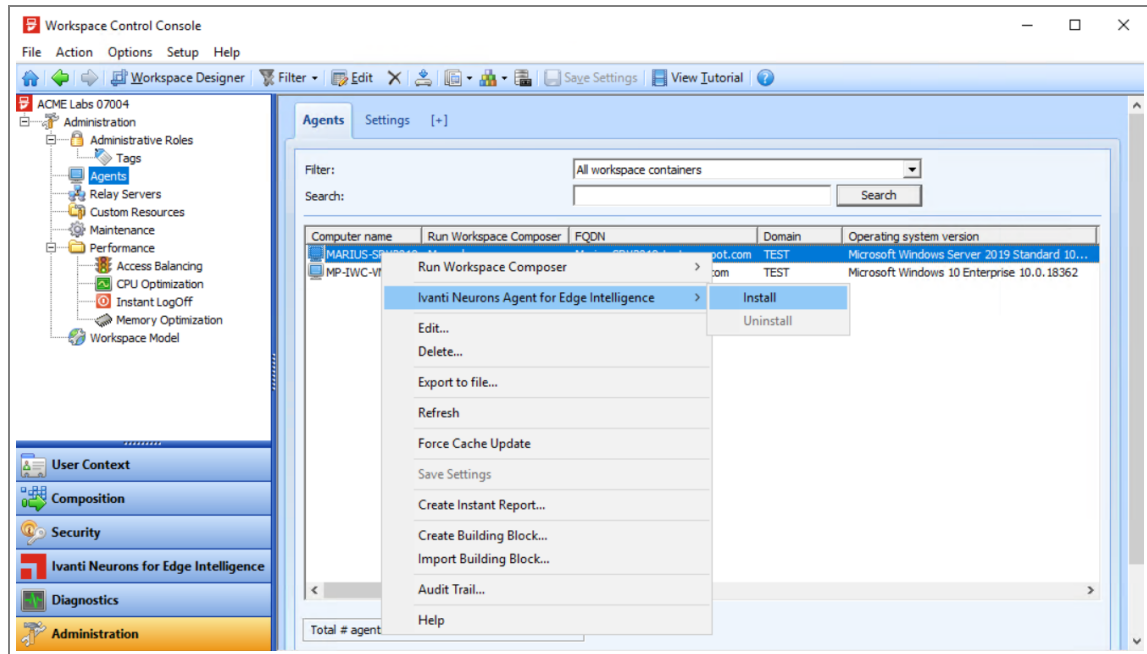
The default option is **Do not automatically download and install the Ivanti Neurons Agent on all agents**.

For more details, see [Ivanti Workspace Control: Getting Start with Neurons for Edge Intelligence](#).

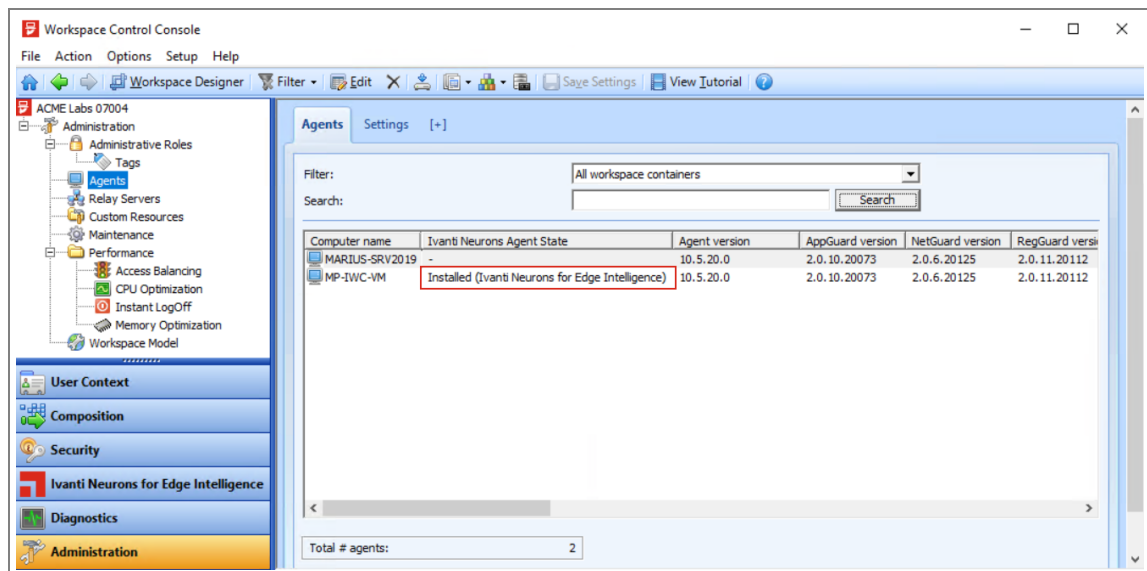
Follow the steps below only if you selected the **Do not automatically download and install the Ivanti Neurons Agent on all agents** option when enabling Workspace Control:

1. To install Neurons Agents, go to **Administration > Agents**.

2. Select one or multiple Workspace Control Agents, right click on the selected Agent(s), then **Neurons Agent for Edge Intelligence > Install**.



3. Once the Neurons Agent is installed, its state is displayed under the **Neurons Agent State** column.



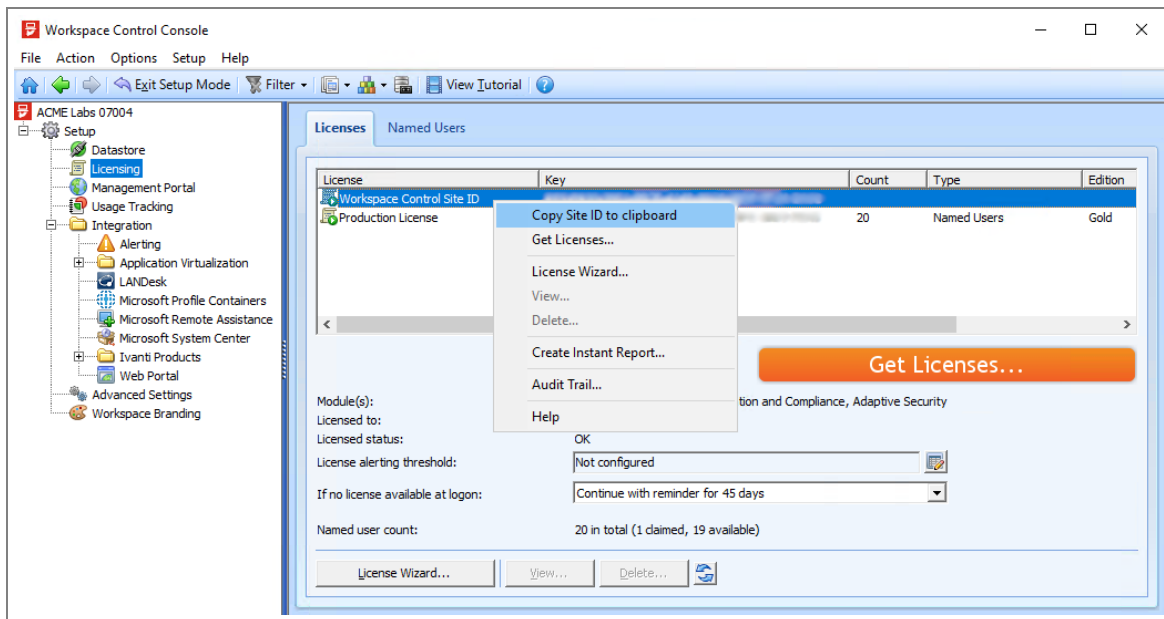
4. To uninstall the Neurons Agent, select one or multiple Workspace Control Agents, right click on the selected Agent(s), then **Neurons Agent for Edge Intelligence > Uninstall**.

Enhanced session logon details for Ivanti Neurons for Edge Intelligence

Ivanti Neurons for Edge Intelligence is now enhanced to better parse logon session details. Once these improvements are implemented in the Neurons for Edge Intelligence backend, the enhanced logon details are visible on the Ivanti Neurons for Edge Intelligence web page.

Copy Workspace Control Site ID from within the Workspace Control Console

In the Workspace Control Console, under **Setup > Licensing**, the Workspace Control Site ID can be easily copied by right-clicking on a license and the select **Copy Site ID to clipboard** from the context menu.



Additional information is found in this [KB article](#).

Automatic administrative refresh to update Active Directory group membership

For Directory Services configured with the option **Get group membership using** set to **Local tokens, until administrative refresh**, group membership acquisition can be automated by configuring the `AdminRefreshWhenOnline` registry setting. This enables Workspace Control to automatically trigger an administrative refresh when the Connection State of Workspace Control Agents changes from Offline to Online, thus updating the Active Directory group membership of the Agents.

Key	HKEY_LOCAL_MACHINE\SOFTWARE\WOW6432Node\RES\Workspace Manager
Value	AdminRefreshWhenOnline
Type	REG_SZ
Data	Yes

Additional information is found in this [KB article](#).

Faster login times for Workspace Control users with resources based on Active Directory groups

Login times are now faster for end-users that have their resources (zones, applications, drive and port mappings etc.) based on Microsoft Active Directory groups.

Additional information is found in this [KB article](#).

Export Ivanti Neurons for Edge Intelligence queries as CSV files

After enabling the IvantiNeurons for Edge Intelligence integration in Workspace Control, queries can be exported as CSV files. In the Workspace Control Console, go to **Ivanti Neurons for Edge Intelligence** and select a query from the predefined list. Click **Toggle View** to list mode and then click **Export as CSV**.



The CSV file is saved in the **Downloads** folder. Once the export is complete, a confirmation pop-up message box appears.

Improved error handling for Folder Synchronization

In Workspace Control 10.5.10.0 and 10.5.10.1 a Folder Synchronization was suppressed:
[After starting a session an error is shown "Empty path name is not legal"](#).

As a result of this change, the possible underlying issue wasn't reported either.

This issue is now resolved.

Additional information is found in this [KB article](#).

Improved network printer disconnect process

The process to disconnect network printers when logging on or off has been improved. This leads to quicker logon and logoff times.

Additional information is found in this [KB article](#).

Icon display and Access Control for Microsoft TS RemoteApp published applications

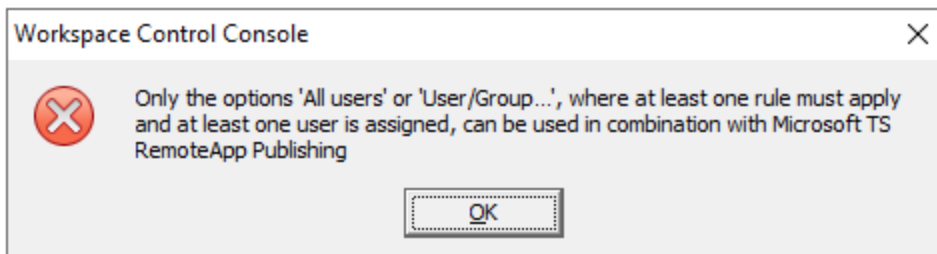
Default and custom icons are now displayed for published application with Microsoft TS RemoteApp.

Besides allowing access for all users and groups, you can now configure **Access Control** for specific users and groups under **Composition > Applications**, on the **Access Control > Identity** tab of a managed application.

Valid access configuration rules:

- All users, or
- Users and groups, where:
 - At least one rule must apply
 - At least one user or group is assigned

When an invalid access rule is selected, the following message displays:



More information is found in this [KB article](#).

Ivanti Neurons for Edge Intelligence executable automatically enabled

Process `UserSessionWorker.exe` was unexpectedly blocked in a secured managed session, after Ivanti Neurons for Edge Intelligence is enabled. The process is now automatically whitelisted and no longer blocked.

Multiple Microsoft Remote Desktop Connection Brokers are usable for Microsoft TS RemoteApp publishing

For redundancy, multiple Remote Desktop Connection Brokers are now usable for Microsoft TS RemoteApp publishing. Previously, TS RemoteApp publishing failed when more than one Connection Brokers were configured.

More information is found in this [KB article](#).

Multi-user mode for Windows Search in Microsoft Profile Containers integration

Windows Search is now included in Multi-user mode for Microsoft Profile Containers integration.

Additional information is found in this [KB article](#).

Option to select how environment variables are resolved in Microsoft Profile Containers integration

For the Microsoft Profile Containers integration, environment variables can now be resolved through:

- The Workspace Control service
- The Profile Container service

Additional information is found in this [KB article](#).

New error levels for batch scripts

Two new error levels have been introduced to facilitate the processing of building blocks in batches:

Error level	Description
15	The <code>file</code> could not be saved.
16	The <code>file</code> has the wrong extension.

For more details about batch scripts, see Process building blocks and custom resources in batches in the [Workspace Control Administration Guide](#).

Additional information is found in this [KB article](#).

Process interception ignores system processes or services

System processes or services, such as `explorer.exe`, are now ignored by Workspace Control process interception.

Additional information is found in this [KB article](#).

Pwrstart.exe replaced by pfwsmgr.exe

When the Workspace Control Composer is set to automatic on workstations, the following registry setting is now set to `pfwsmgr.exe` instead of `pwrstart.exe`:

```
KEY_LOCAL_MACHINE\SOFTWARE\Microsoft\Windows NT\CurrentVersion\Winlogon
```

Protocol type changes from Local to ICA in session overview

Subnets can be configured on endpoints where a Workspace Control Agent runs alongside a Citrix Virtual Desktop Agent. To ensure subnets are detected as local sessions and not remote sessions, the following registry settings can now be configured:

Key	<ul style="list-style-type: none">• HKEY_LOCAL_MACHINE\SOFTWARE\RES\Workspace Manager (32-bit)• HKEY_LOCAL_MACHINE\SOFTWARE\WOW6432Node\RES\Workspace Manager (64-bit)
Value	ExcludeClientIPs
Type	REG_SZ
Data	<i>IP addresses separated by semicolons (;)</i> For example: 192.168.0;192.168.1

Key	<ul style="list-style-type: none">• HKEY_LOCAL_MACHINE\SOFTWARE\RES\Workspace Manager (32-bit)• HKEY_LOCAL_MACHINE\SOFTWARE\WOW6432Node\RES\Workspace Manager (64-bit)
Value	RestrictClientIPs
Type	REG_SZ
Data	<i>IP addresses separated by semicolons (;)</i> For example: 192.168.0;192.168.1

Additional information is found in this [KB article](#).

Pinned icon for Workspace Control Console covers entire tile

For newly created user profiles, the pinned icon for the Workspace Control Console now covers the entire tile.

Workspace Control Reporting Services enhanced with READPAST Table Hints

Workspace Control Reporting Services now have READPAST Table Hints added to queries that use the tables for Usage Tracking. This SQL optimization prevents database locking.

Additional information is found in this [KB article](#).

Terminate End Program windows

On rare occasions, users cannot log off from the Workspace Control session. This occurs when specific criteria are met that end up generating an **End Program** window during user session logoff.

Create the following registry setting to configure Workspace Control to monitor for windows titled **End Program** and terminate such windows if found.

If the **Data** field is configured to `Yes`, Workspace Control checks for **End Program** windows every 500 milliseconds, or twice per second. To configure more frequent checks, specify a monitoring interval, in milliseconds, instead of `Yes`.

Key	HKEY_LOCAL_MACHINE\SOFTWARE\WOW6432Node\RES\Workspace Manager
Value	MonitorEndProgram
Type	REG_SZ
Data	<ul style="list-style-type: none">• Yes• <i><monitoring interval></i> (10-500)
Default	500

Additional information is found in this [KB article](#).

Compatibility Updates

The following compatibility updates are part of this release:

Start a second managed application hosted on machine type Desktop OS

Using Citrix Virtual Apps and Desktops, a second managed application can now be started on machines of type Desktop OS.

Additional information is found in this [KB article](#).

Use Citrix StoreBrowse to start managed published applications

The Citrix StoreBrowse command-line utility can be used to start Workspace Control managed published applications.

Additional information is found in this [KB article](#).

Bug Fixes

The Workspace Control 2021.1 Release Notes is a cumulative document that includes bug fixes from previous Workspace Control versions, starting with 10.5.10.0 and up to the current version - 10.6.0.0.

The following customer support issues have been resolved in this release:

Problem ID	Title
73252 76298	Process Interception for Citrix Published Applications is not working. Link to KB article
73253	Changing from Location Context can cause Security Rules to be applied incorrectly in managed Ivanti Workspace Control sessions. Link to KB article
73433	Warning message: <code>clsPFDal.OpenResultSet: (0) Agent connected to RelayServer is doing SQL: SELECT * FROM tblObjects WHERE ObjectGUID = ?</code> Link to KB article
73991	Managed application security blocks end-users from installing User Installed applications. Link to KB article
74191	The following error message appears in the Error Log: <i>(0) - Invalid high surrogate character (0xDE35). A high surrogate character must have a value that falls within the range (0xD800 - 0xDBFF).</i> Link to KB article
74234	Workspace Control splash screen stops at 0% during logon. Link to KB article
74384	Message "AppGuard was unable to protect your session" when troubleshooting with registry value <code>ProtectLocalCache</code> . Link to KB article
74422	Search option for printers is not selectable (grayed out) for Administrative Roles. Link to KB article
74622	A black screen is displayed when logging into a managed RDP session. Link to KB article

Problem ID	Title
74641	After upgrading to Workspace Control 10.3.180.0 or higher, the following error message appears in the Error Log: <i>dicProcessInfo.CheckHandles - Process with an Id of %PID% is not running.</i> Link to KB article
74721	Sometimes, applications are not started after end-users click on Workspace Control managed applications. Link to KB article
74952	The following error message is displayed after starting a Workspace Control session: <i>Empty path name is not legal.</i> Link to KB article
74978	The current activity overview of Usage Tracking Viewer is limited only to the currently logged in user. Link to KB article
75075	Workspace Control logon in an offline scenario hangs on Domain Controller query. Link to KB article
75161	Workspace Control Access Control generated the following message when changing the Identity rule: <i>Can't change the access mode to 'All the rules must apply' because this configuration would never grant access to the object.</i> Link to KB article
75230	Pinned taskbar shortcuts are not saved in Workspace Control 10.4.40.0 or higher. Link to KB article
75255	Desktop icon positions are not saved on Microsoft Windows 10, Windows Server 2016 or higher. Link to KB article
75364	Already installed Neurons Agents are incorrectly detected by Workspace Control. Link to KB article
75482	No alerting notifications are sent for Authorized Certificates Security events. Link to KB article
75539	File version is not displayed in managed applications Security Log for certificate blocks. Link to KB article

Problem ID	Title
75555	After upgrading to Workspace Control 10.4.0.0 or higher, error messages are generated in the error log: <i>pwrCache.exe - modPwrCache.ConfigureProfileContainers</i> . Link to KB article
75572	After upgrading to Workspace Control 10.5.10.0, the following error is displayed during logon: <i>AddAGMiniEntry (0) - Index was out of range</i> . Link to KB article
75599	Folder synchronization is working incorrectly in Workspace Control 10.5.10.0. Link to KB article
75602	Policy setting is moved to the wrong application. Link to KB article
75640	Deselecting File Types , E-mail Settings and Data Sources nodes for Instant Reports also deselects Composition > Applications node. Link to KB article
75651	On booted machines, the following error message is logged in the error log: <i>(0) Message could not be parsed</i> . Link to KB article
75749	In Workspace Control 10.5.10.0, newly added Authorized Files rules for a second managed application are not applied after a Workspace refresh. Link to KB article
75752	After upgrading to Workspace Control 10.5.10.1, the following error message is displayed during logon: <i>Not found - clsRegistryValueChangeMonitor.RegistryWMValueChangeMonitor</i> . Link to KB article
75844	Automation log in Workspace Control Console is not showing log entries. Link to KB article
75846	Workspace Control Console not showing all Citrix Delivery Groups. Link to KB article
75905	Error: <i>Violation of PRIMARY KEY constraint `PK_Licenses` Cannot insert duplicate key in object 'dbo.tblLicenses'. The duplicate key value is {GUID}</i> . Link to KB article

Problem ID	Title
75925	Changes to Actions configured at the application end are not saved for custom Administrative Role. Link to KB article
75968	Edit Workspace Control Agent from context menu generates error (438) <i>Object doesn't support this property or method.</i> Link to KB article
75969	Workspace Control Console generates error (6) <i>Overflow</i> when adding an XML to Custom Resources. Link to KB article
75970	Unable to add new files for User Home Directory and User Profile Directory with custom Administrative Role. Link to KB article
75973	FSLogix groups are emptied when Microsoft Profile containers integration is disabled. Link to KB article
75974	The Everyone identity group not added to local FSLogix Include groups when used on an OS with other language than UK/US English. Link to KB article
75985	High CPU usage for Workspace Control Composer within managed sessions on machines with Microsoft multi-session Windows. Link to KB article
75986	Enabling Certificate Security results in delayed session logon and application start. Link to KB article
76018	User can gain elevated rights in a Workspace Control session. Link to KB article
76023	An unspecified attack vector makes it possible to start unapproved applications with elevated privileges. Link to KB article
76136	Workspace Control Console fails to connect to Datastore after upgrade. Link to KB article

Problem ID	Title
76137	After a Workspace refresh, <code>ProcessSecurity.CheckProcessSecurity</code> returns error C511503: <i>Index was out of range. Must be non-negative and less than the size of the collection.</i> Link to KB article
76167	Local cache of Workspace Control Agents is not updated when Agents are connected to Relay Servers. Link to KB article
76187	Workspace Control Console fails to connect to Datastore during managed sessions after upgrading to Workspace Control version 10.5.30.0. Link to KB article
76193	Workspace Control Composer intermittently becomes unresponsive at 7%. Link to KB article
76203	Forcing the use of the cached user-context creates a logon delay. Link to KB article
76236	Ivanti Neurons for Edge Intelligence integration in Workspace Control is not working as expected. Link to KB article
76259	Error when enabling the Delay autolaunch until session startup completed option for Microsoft Teams and Skype. Link to KB article
76339	Starting Workspace Control managed published applications on servers using Citrix StoreBrowse results in error: <i>Application can't started... Instant Passthrough could not be resolved.</i> Link to KB article
76406	Folder Synchronization tasks are not working after upgrading to Workspace Control version 10.5.30.0. Link to KB article
76440	Failed redirection of the client-side battery status into the Remote Desktop Notification Area. Link to KB article

Problem ID	Title
76459	The summarizing of repeating errors does not function. Link to KB article
76510	Option New Menu not available even with the correct administrative role permissions. Link to KB article
76514	On logon, the Workspace Composer (pfwsmgr.exe) returns error C492213: <i>The file cannot be accessed by the system.</i> Link to KB article
76670	In environments with more than 3000 printers, database deadlocks occur on tblObjects. Link to KB article
76679	When duplicating user registries or policies, an extra copy of the item is created. Link to KB article
76695	Applications shortcuts pinned to the taskbar are not saved between Workspace Control sessions or after a Workspace refresh. Link to KB article
76737	The Workspace Composer (pfwsmgr.exe) generates error: <i>Desktop_Shell value not found. LastShell=.</i> Link to KB article
76764	Shortcut for Ctxdndsourceproxy unintentionally appears on the taskbar. Link to KB article
76785	Registry setting CachedDBsettings is configured during Workspace Control Agent-only installations. Link to KB article
76793	When opening MSG files with Microsoft Outlook, it results in error: <i>Cannot start Microsoft Outlook. The command line argument is not valid. Verify the switch you are using.</i> Link to KB article
76798	In Workspace Control managed sessions, Microsoft App-V application shortcuts launch unmanaged application instances. Link to KB article

Problem ID	Title
76799	In Workspace Control version 10.5.30.0 or higher, the Workspace Composer (pfwsmgr.exe) causes high CPU loads. Link to KB article
76829	First-time cache synchronization fails and results in no managed application shortcuts being available in user Workspace Control sessions. Link to KB article
76831	After installing Workspace Control, managed sessions have unmanaged application shortcuts present in the Start Menu. Link to KB article
76848	Increased search times when performing Agent searches in Workspace Control version 10.5.20.0 or higher. Link to KB article
77113	When editing authorized files under Security > Authorized Files , pwrtech.exe generates error (91): <i>Object variable or With block variable not set</i> . Link to KB article
77131 77388	When importing Building Blocks between different Workspace Control environments, pwrtech.exe generates error (13): <i>Type mismatch - sharedBuildingBlock.ImportBuildingBlock_UserPrefs</i> . Link to KB article
77178	When creating new Workspace Container, the Properties tab is incorrectly in focus. Link to KB article
77181	Incorrect Website Security behavior when whitelisting or blacklisting URLs that include port numbers. Link to KB article
77211	When importing building blocks into the Workspace Control Console, the bypass Composer configuration is not applied. Link to KB article

Problem ID	Title
77214	When starting a Workspace Control session with option Bypass Composer for accounts and groups enabled, the Workspace Composer (pfwsmgr.exe) generates error: <i>modMain.fysnBypassComposer -- Object Reference not set to an instance of an object.</i> Link to KB article
77220	When the Workspace Composer (pfwsmgr.exe) is terminated during a Workspace Control session, the Composer is not restarted. Link to KB article
77289	Navigating to Composition > User Settings in the Workspace Control Console, while User Settings are disabled, triggers dialog box: <i>Not all required parameters are filled in. Would you like to continue?</i> Link to KB article
77335	Managed applications configured with option Autolaunch at session start set to Voluntary do not automatically launch at session start. Link to KB article
	Missing Microsoft .NET Framework 4.7.2 requirement check from the Workspace Control MSI Installer. Link to KB article
	Fixed a display error in Composition > User Settings that occurs when the Name column has a very large width.
	Fixed a display issue when attempting to uninstall the Ivanti Neurons Agent for a non-persistent VDI environment.
	Fixed an issue that resulted in the incorrect restoration of Ivanti Neurons for Edge Intelligence Building Blocks.

Additional information

Workspace Control Product Area

Product downloads and documentation, or useful configuration and troubleshooting guides are found at the following link:

<https://forums.ivanti.com/s/workspace-control-powered-by-res>

Previous Versions of Ivanti Workspace Control

Downloads links to previous versions of Ivanti Workspace Control and their corresponding release notes are available on the Ivanti Community:

<https://forums.ivanti.com/s/article/Ivanti-Workspace-Control-revision-download-links>

Supported Operating Systems and Technologies

Supported Operating Systems, Database Systems, Directory Services, and third-party software are detailed in the Compatibility Matrix:

https://help.ivanti.com/res/help/en_US/IWC/2021/Help/Content/49657.htm

Workspace Control Upgrade Guide

Information about the upgrade path of Workspace Control is found at the following link:

<https://forums.ivanti.com/s/article/Ivanti-Workspace-Control-Upgrade-Guide-10-2-x-10-3-x>

Workspace Control Antivirus Best Practices

Antivirus exclusions required for Workspace Control are found at the following link:

<https://forums.ivanti.com/s/article/Ivanti-Workspace-Control-Antivirus-Best-Practices>

Workspace Control Ideas

Vote for new ideas or submit your own ideas for Workspace Control:

<https://ivanti.uservoice.com/forums/928756-workspace-control>

Further Help and Information

Information about installing, configuring, and using Ivanti Workspace Control is available in the Administration Guide:

https://help.ivanti.com/res/help/en_US/IWC/2021/Help/default.htm